

# Key worker housing workshop

CHIA Vic conference – 2 April 2025



COMMUNITY HOUSING  
Industry Association Victoria

# CHIA Vic Key worker housing project

Develop a potential key worker housing model via partnership between:

- Community housing organisations
- Local councils
- Local employers



# Proposed toolkit

To support delivery of key worker housing and enable a strategic approach

## Framework

Guidance to identify need and develop solutions

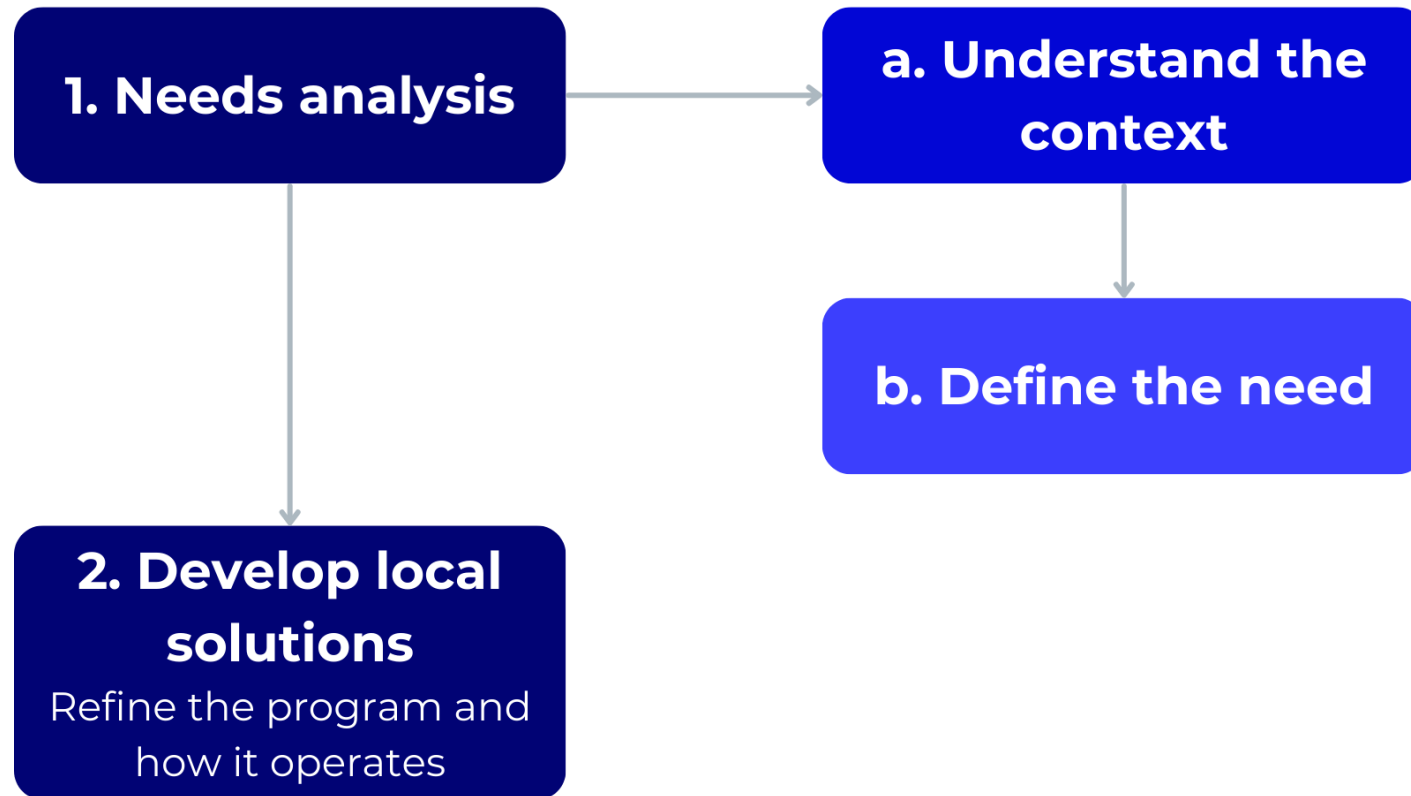


## Case studies

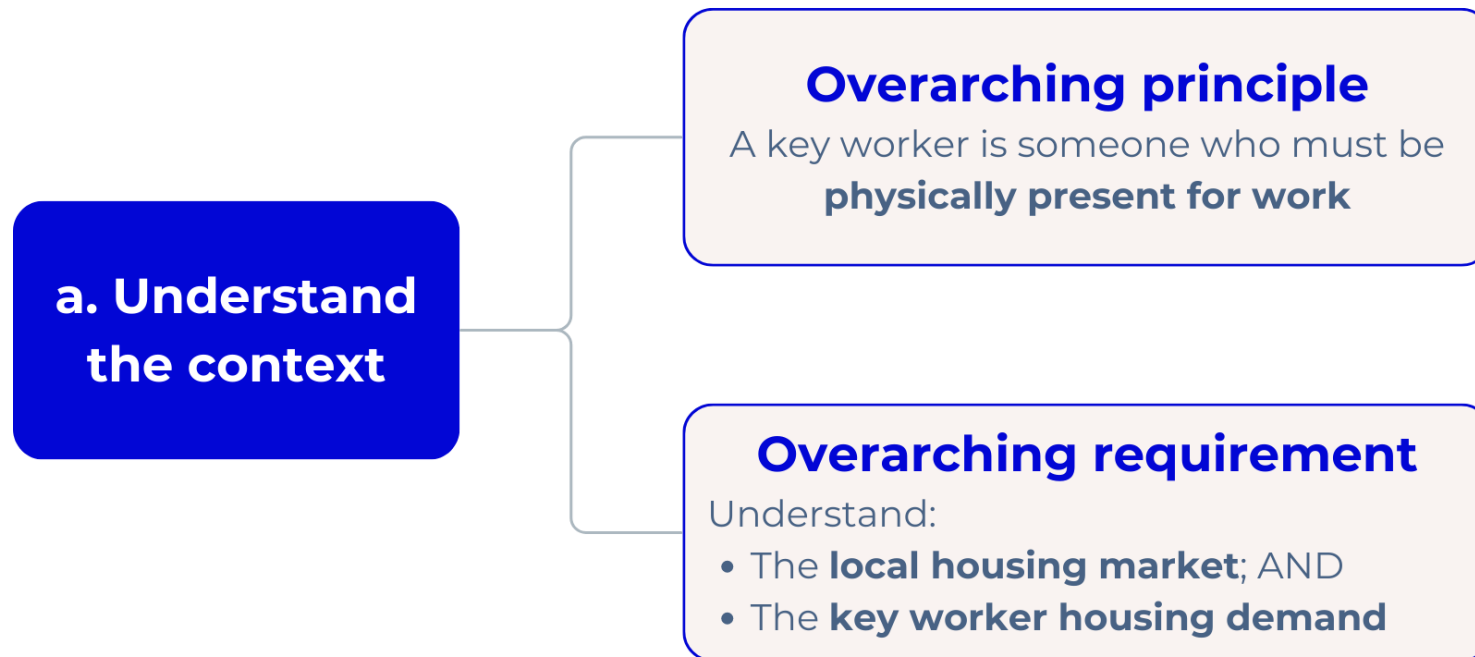
Practical examples to support framework application



# Proposed framework



# Proposed framework – needs analysis



## Framework content:

- What questions need to be answered
- Data sources to help answer questions



# Proposed framework – needs analysis

## b. Define the need

**Housing program**  
Subsidised housing, market housing

**Tenure type**  
E.g. from very short term for drive-in-drive-out workers to long-term for people permanently relocating

**Size of homes**  
E.g. from studio apartments to four or more bedroom houses

**Types of homes**  
E.g. tiny homes, apartment, units, free-standing houses

**Location**  
E.g. proximity to services and workplaces, specific towns

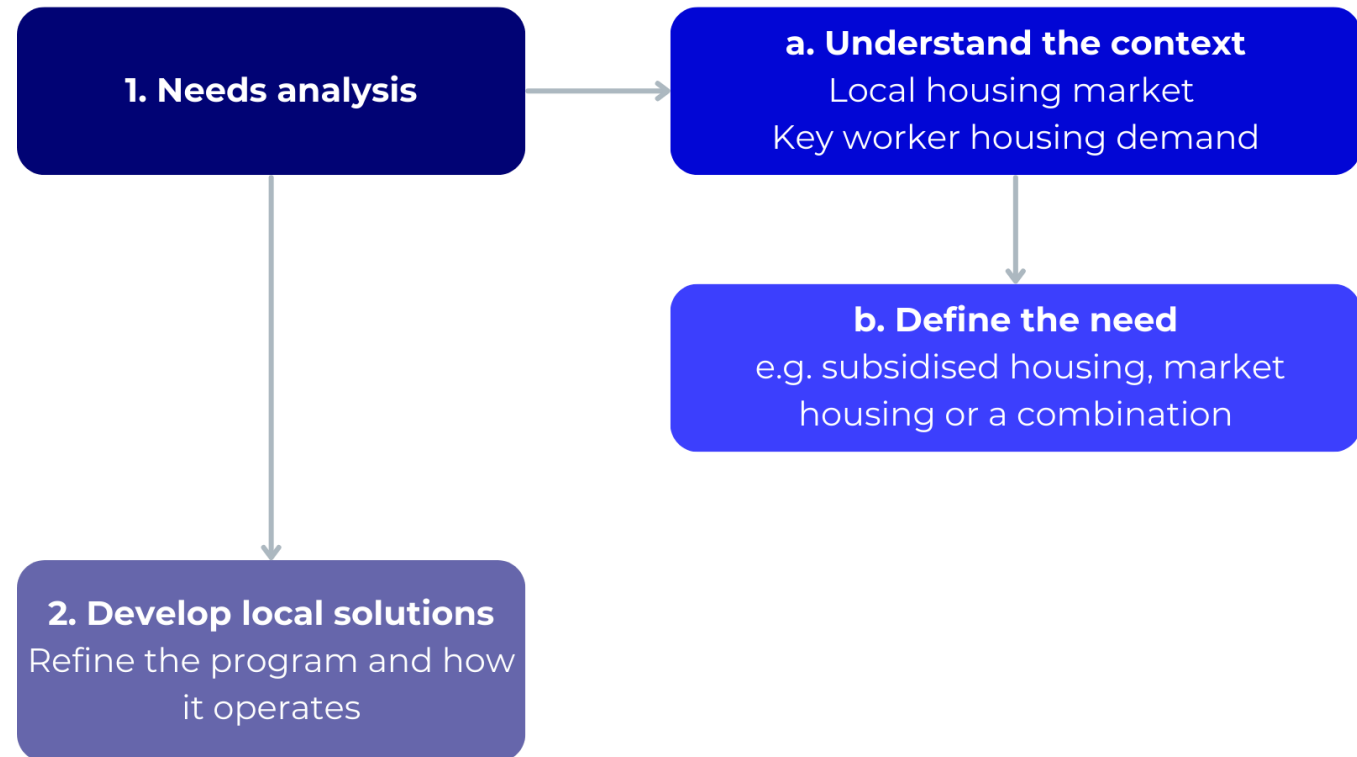
**Other considerations needed?**



# Activity 1 – needs analysis

## In your groups:

- Discuss the questions on your handout
- Nominate a scribe
- Nominate someone to report back



# Understand the local housing market

What questions need to be answered



Data sources to help answer questions

## Example questions to be answered

- How many rental homes are available?
- What kinds of rental homes are available? E.g. one bedroom apartments, four bedroom houses
- What is the cost of rental housing?
- What is the reason for KWH shortage? Supply issue? Affordability issue? Combination?
- Where is the housing located? Where are the gaps?





# Understand the key worker housing demand

What questions need to be answered



Data sources to help answer questions

## Example questions to be answered

- What are the attributes of workers that need housing?
  - Industries
  - Professions
  - Salaries
  - Employment type - e.g. short-term, permanent
  - Household size



- How many workers need housing? Now and future

## **b. Define the need**

### **Housing program**

Subsidised housing, market housing

### **Tenure type**

E.g. from very short term for drive-in-drive-out workers to long-term for people permanently relocating

### **Size of homes**

E.g from studio apartments to four or more bedroom houses

### **Types of homes**

E.g. tiny homes, apartment, units, free-standing houses

### **Location**

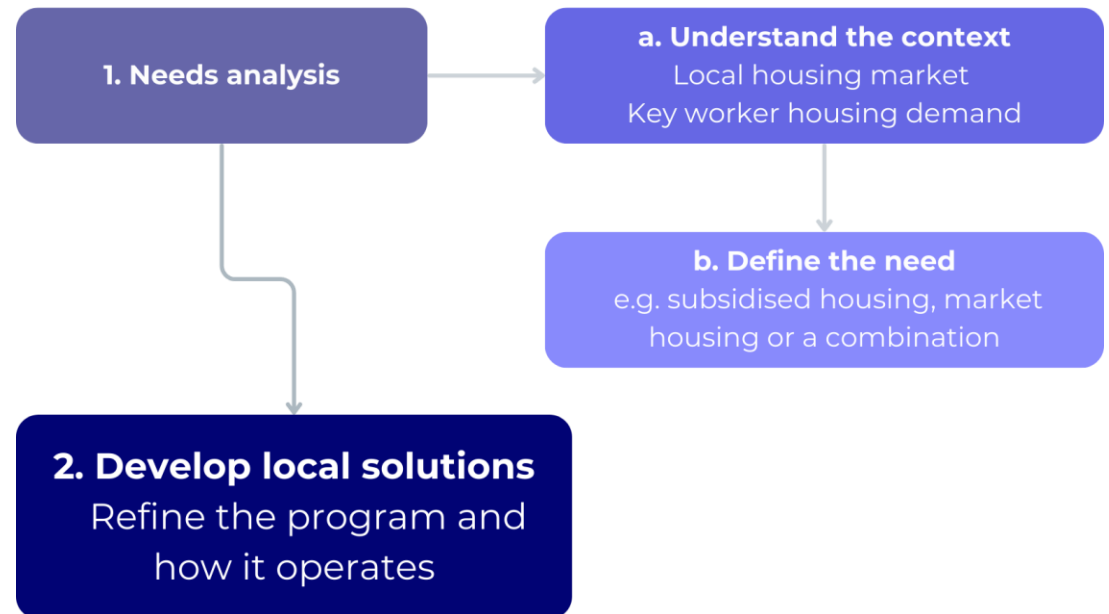
E.g. proximity to services and workplaces, specific towns

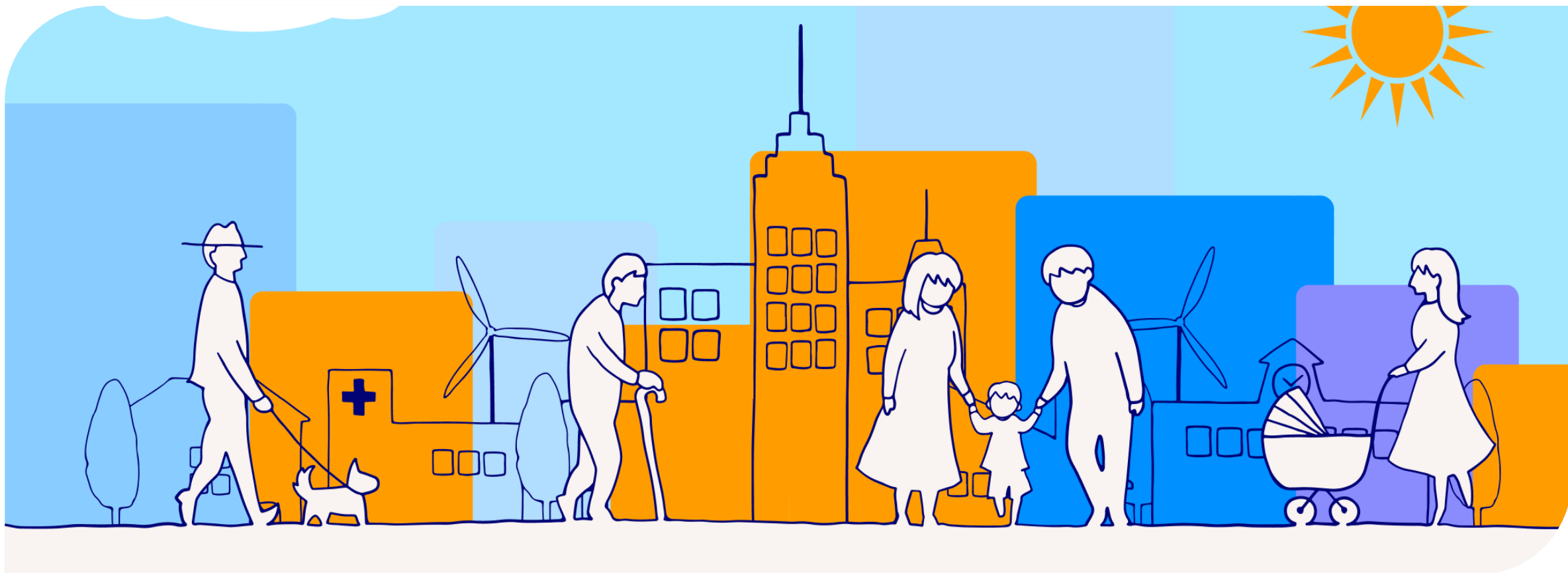


# Activity 2 – develop local solutions

## In your groups discuss:

- What needs to be considered to develop local solutions? (e.g. stakeholders, land)
- What does this section of the framework need? Is it just case studies? Or something else?





Thank you

**Questions? Contact Steph:**

Stephanie Ng - Policy Officer

0413 957 865

[Stephanie.ng@chiavic.com.au](mailto:Stephanie.ng@chiavic.com.au)