

Plan for Victoria

A plan for Victoria
written by Victorians

MARCH 2025: LESTER TOWNSEND



Department
of Transport
and Planning

Plan for Victoria

Inclusive, liveable, sustainable, prosperous, and enriching. Plan for Victoria sets the state-wide vision for how Victoria will grow over time. This is a plan for Victoria written by Victorians.



Plan for Victoria written plan

Download and read the Plan for Victoria written plan.

[Download the written plan](#)

A different way of planning



A new way of planning

1959 to 1987

Engineering

Narrow thinking
Bold actions

2024 onwards

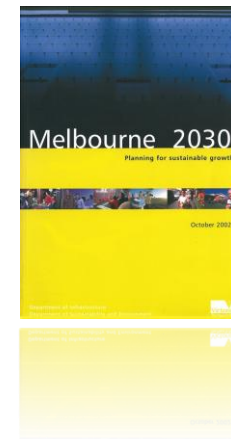
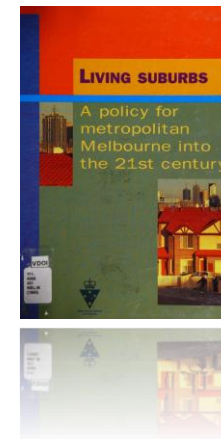
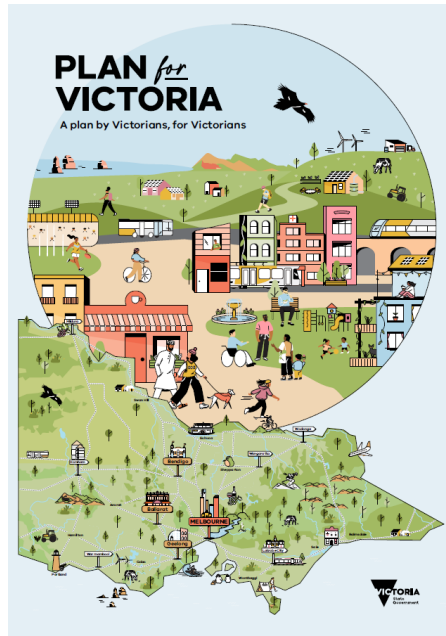
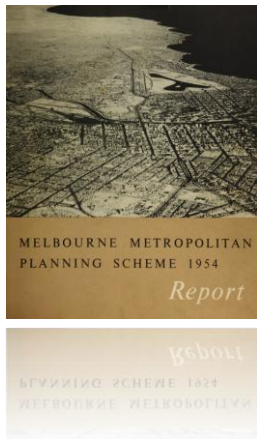
Community led

Broad thinking
Focussed actions

The last 30 years

Policy led

Broad thinking
Regulation driven
(Implementation not baked in)



What is planning?

Engineering

... roads, sewerage and other facilities



Community led

Victoria's success and prosperity rely on ensuring we have a long term plan for all of

THIS WOMAN'S DIFFICULTY is typical of what thousands of Melbourne housewives suffer today because the city's unguided sprawl has meant homes without made roads, sewerage and other facilities.

what we love about where we live, work, play and raise our families.

Policy led

Plans for plans

Planning is a way of creating a better Victoria for everyone. Planning covers the rules that govern land use and development in Victoria. Everyone can be involved in creating and influencing the creation of planning schemes.

The shifting planning mindset

Engineering

Space

Solving the
problems

**Action but ...
No real attention to what
people wanted**



The shifting planning mindset

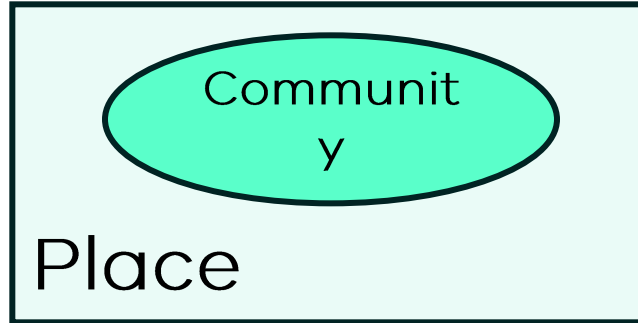
Engineering



Solving the problems

**Action but ...
No real attention to what people wanted**

Community led



Creating the future

**People in places ...
Delivering actions that people want**

Policy led



Regulating change

**What planners think people want but ...
Limited action**

The shifting planning mindset

Engineering

Community led

Policy led



12.03
23/07/2018
VC148

WATER BODIES AND WETLANDS

12.03-15
16/12/2022
VC201

River and riparian corridors, waterways, lakes, wetlands and billabongs

Objective

To protect and enhance waterway systems including river and riparian corridors, waterways, lakes, wetlands and billabongs.

Strategies

Protect the environmental, cultural, landscape values of all waterway systems as significant economic, environmental and cultural assets. Conserve waterway systems and the landscapes and environmental values surrounding them by protecting ecological values, indigenous vegetation, terrestrial and aquatic habitats and encouraging biodiversity.

Sensitively design and site development to maintain and enhance the waterway system and the surrounding landscape setting, environmental assets, and ecological and hydrological systems.

Address the impacts of use and development on drought and flooding events at a catchment and site scale to protect the health and natural function of waterway systems and their surrounding landscape and environment.

Protect geomorphology, bank stability and flood management capacity to strengthen the environmental value and health of waterway systems by:

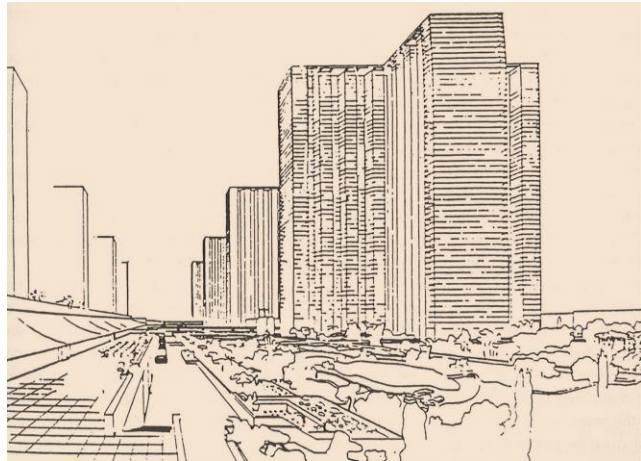
- Retaining, enhancing and re-establishing indigenous riparian vegetation along waterway systems, ensuring it responds to the bushfire risk of a location.
- Enhancing and re-establishing both terrestrial and aquatic habitats and their linkages along and surrounding waterway systems.
- Limiting earthworks in proximity to waterway systems to minimise alterations to geomorphology, natural drainage, natural flows and water quality.
- Facilitating the restoration of waterway systems through the removal of weeds, invasive species and pests.

Enhance a sense of place and landscape identity by:

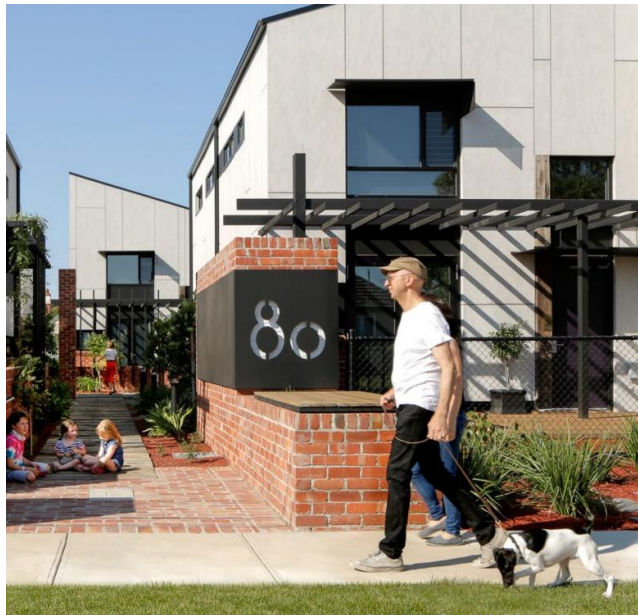
- Conserving areas of identified Victorian Aboriginal cultural heritage significance relating to waterway systems.
- Retaining and re-establishing vegetation, including grasslands and canopy trees, surrounding waterway systems to enhance and connect to the landscape setting, ensuring it responds to the bushfire risk of a location.

The shifting planning mindset

Engineering



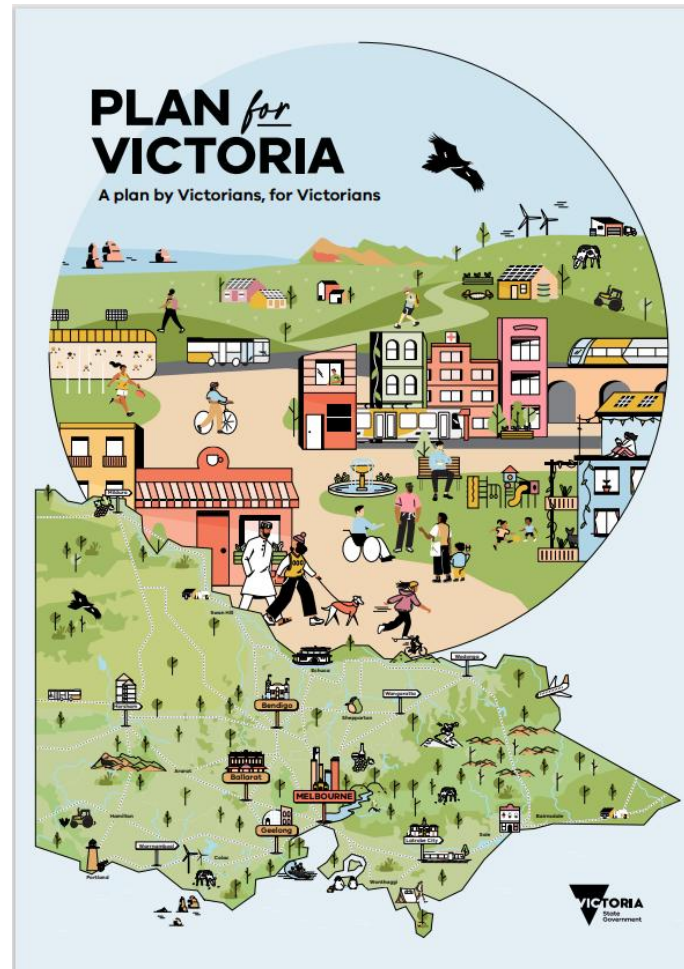
Community led



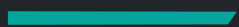
Policy led



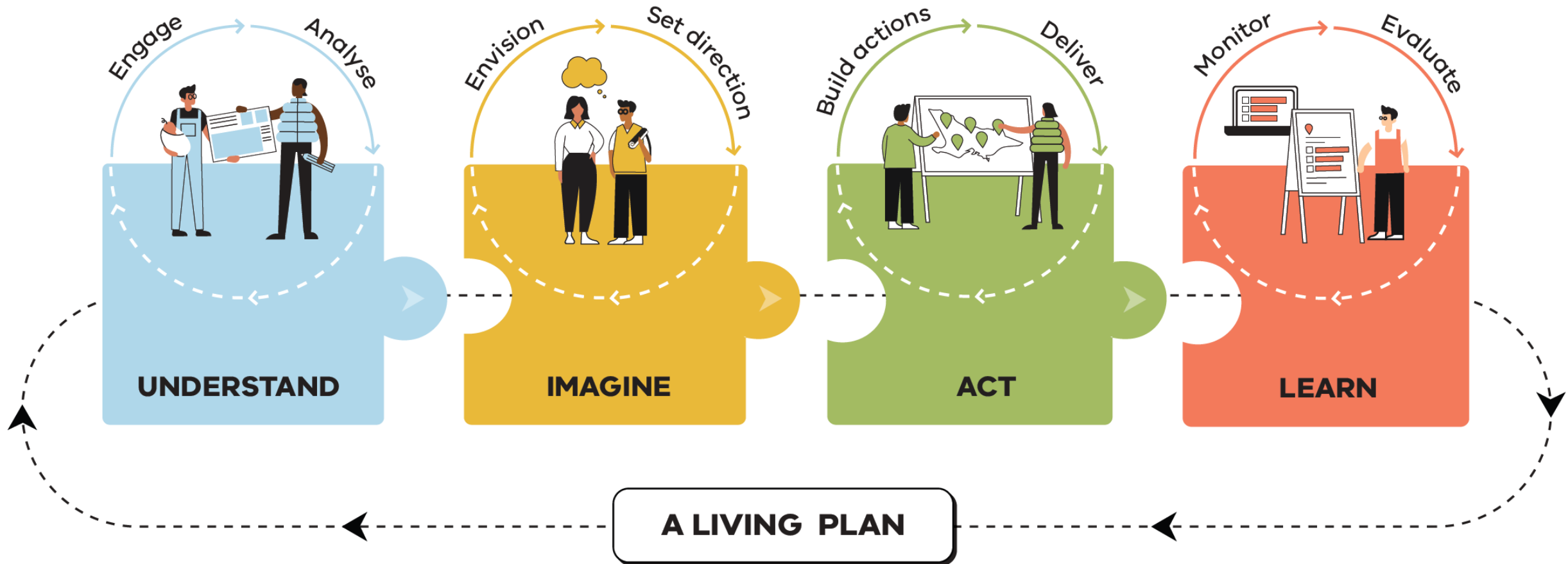
Community led



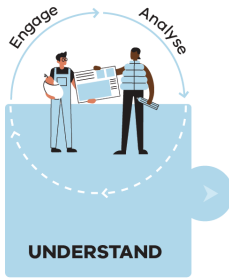
Action oriented



Understand → Imagine → Act → Learn



Understand: Engage



The most extensive community-led consultation ever for a Victorian strategic plan

120+
community events held

45
events held in regional
and rural Victoria



2,500+
online surveys submitted

15,000+
items of feedback gathered

247
written submissions received



1,300+ young people engaged

29+ multicultural groups engaged

260+ industry stakeholder
representatives engaged

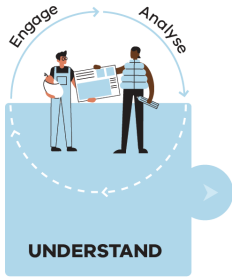
55 survey respondents identifying as
Aboriginal and/or Torres Strait Islander

All metropolitan councils engaged in one-
on-one sessions and regional and rural
councils in group sessions

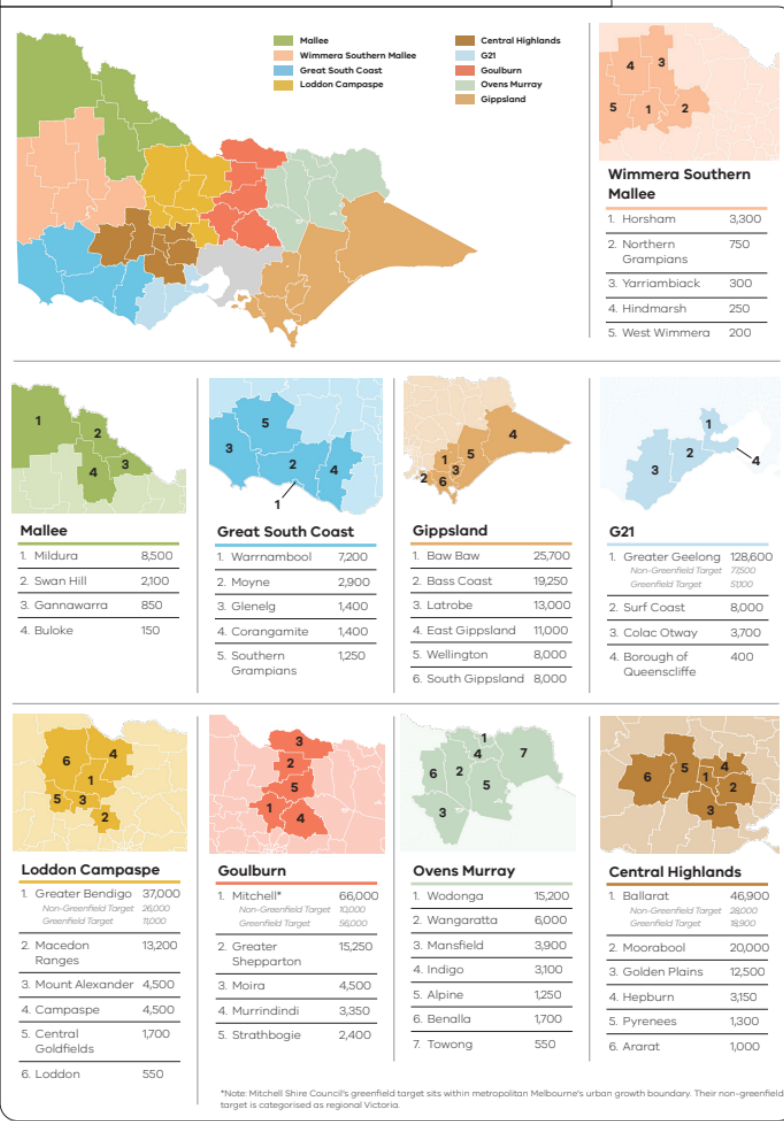


Find out more about the engagement program and what Victorians told us [here](#).

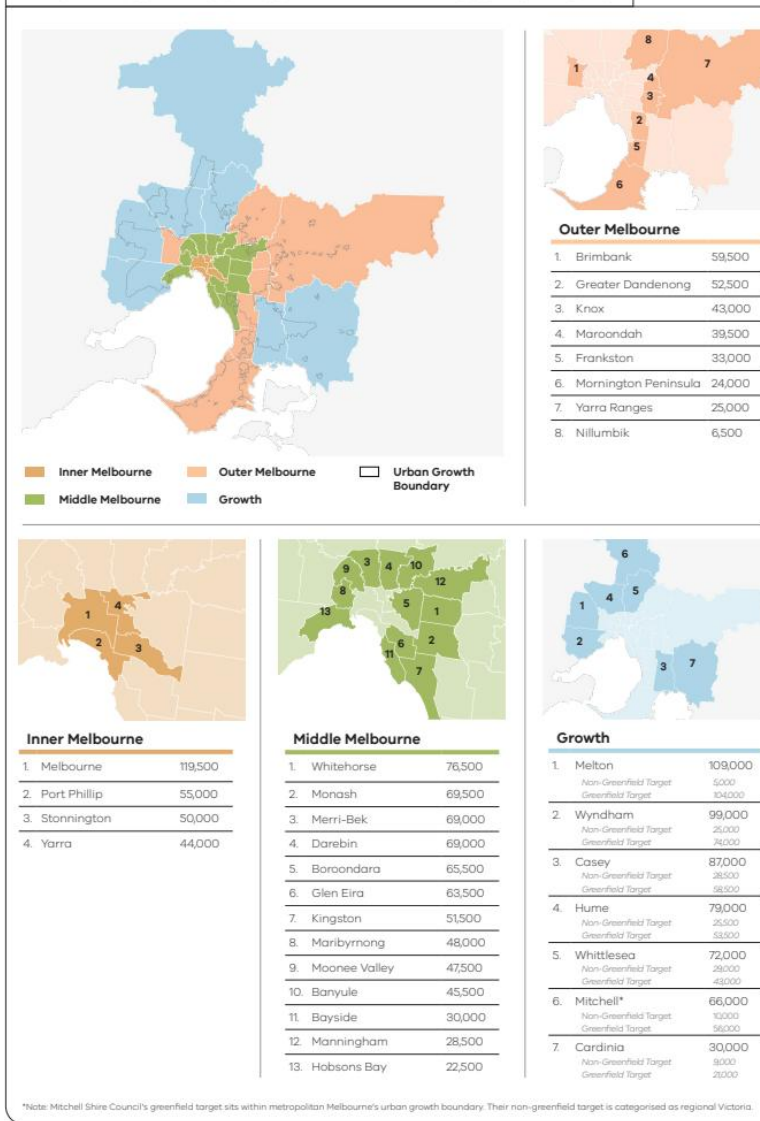
Understand: Analyse



MAP 4: REGIONAL LOCAL GOVERNMENT AREA HOUSING TARGETS



MAP 5: MELBOURNE LOCAL GOVERNMENT AREA HOUSING TARGETS



Imagine: **Envision:** The People's Panel vision for Victoria



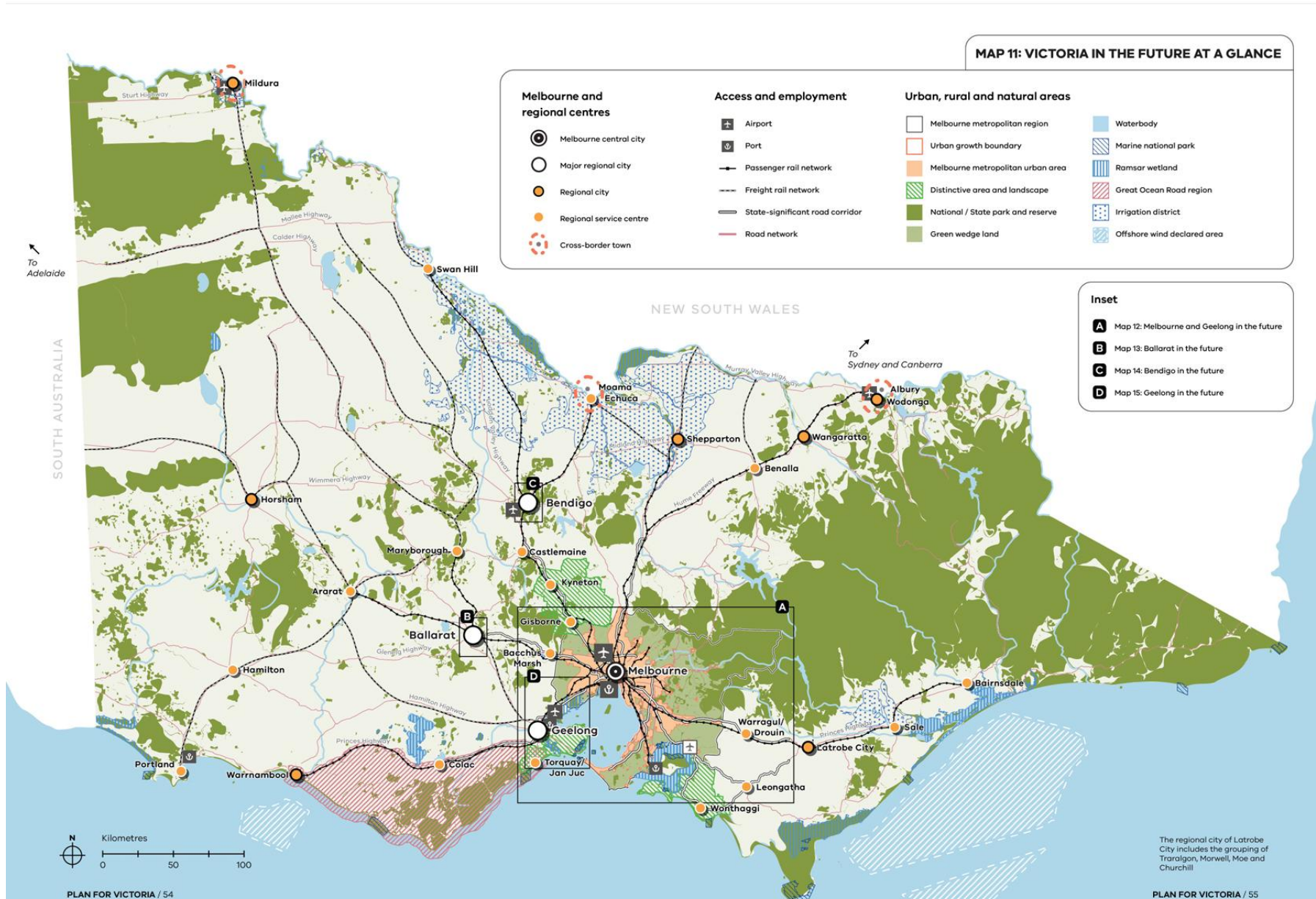
The People's Panel vision for Victoria

By 2050, Victoria will be a vibrant, accessible and connected community, valued for its diverse cultures, sustainable environmental practices and respect for the First Peoples of Victoria.

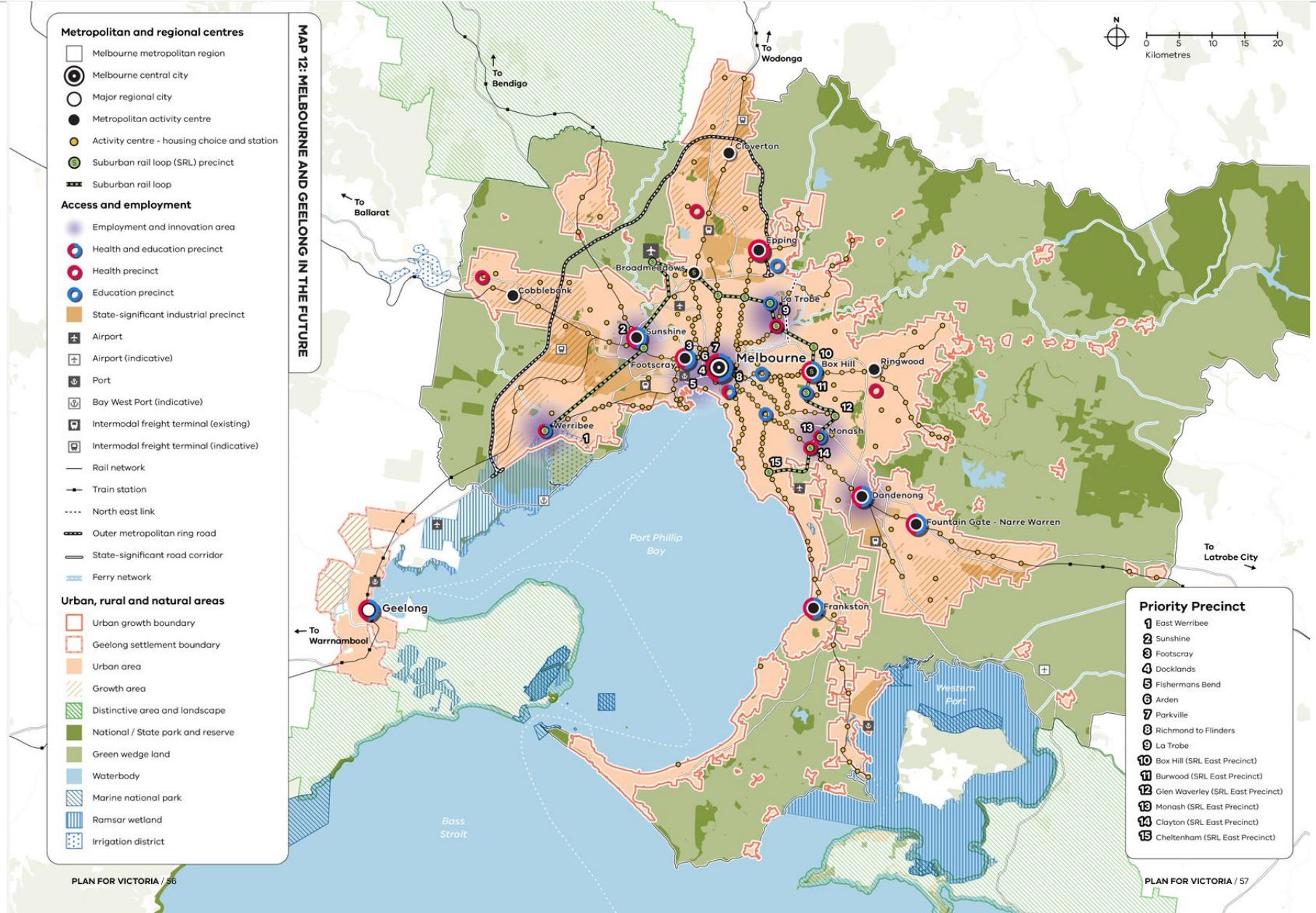
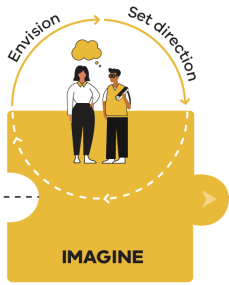
Building a state that provides choices and opportunities for current and future generations of Victorians in quality housing, transport, employment, environment and connectivity will require input from the community, government, local businesses and industry alike.

We will create a society that caters to the unique needs of all Victorians, nurturing individual health through physical and cultural recreation.

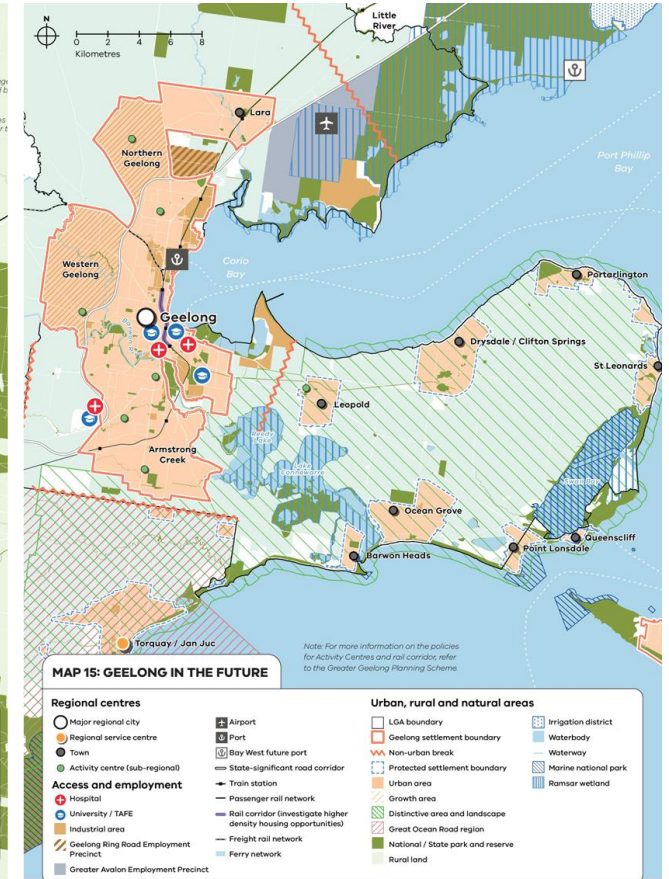
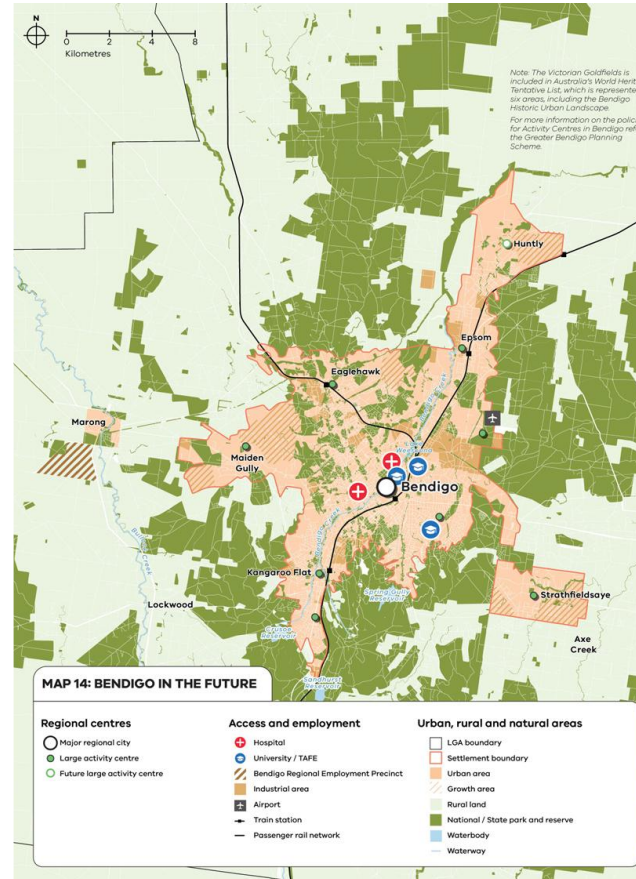
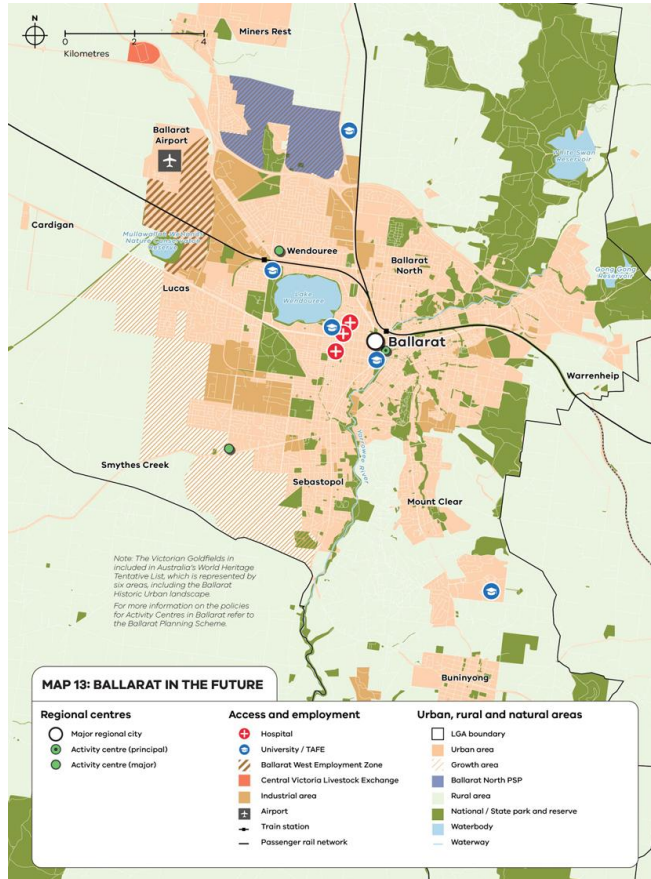
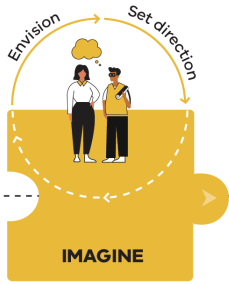
Imagine: Set Direction



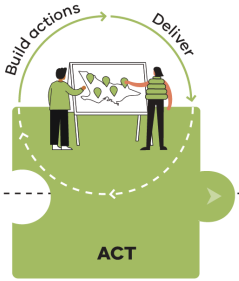
Imagine: Set Direction



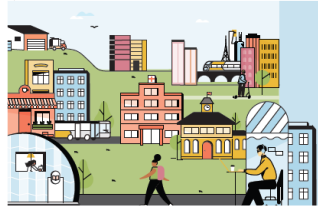
Imagine: Set Direction



Imagine: **Build actions**



Pillar 1:
Housing for all Victorians



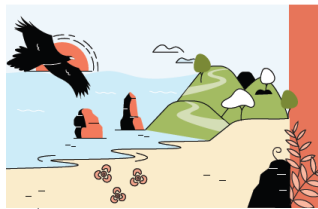
Pillar 2:
Accessible jobs and services



Pillar 3:
Great places, suburbs and towns



Pillar 4:
Sustainable environments



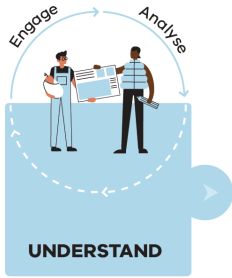
Pillar 5:
Self-determination and caring for Country

Housing for all Victorian: **Engage**

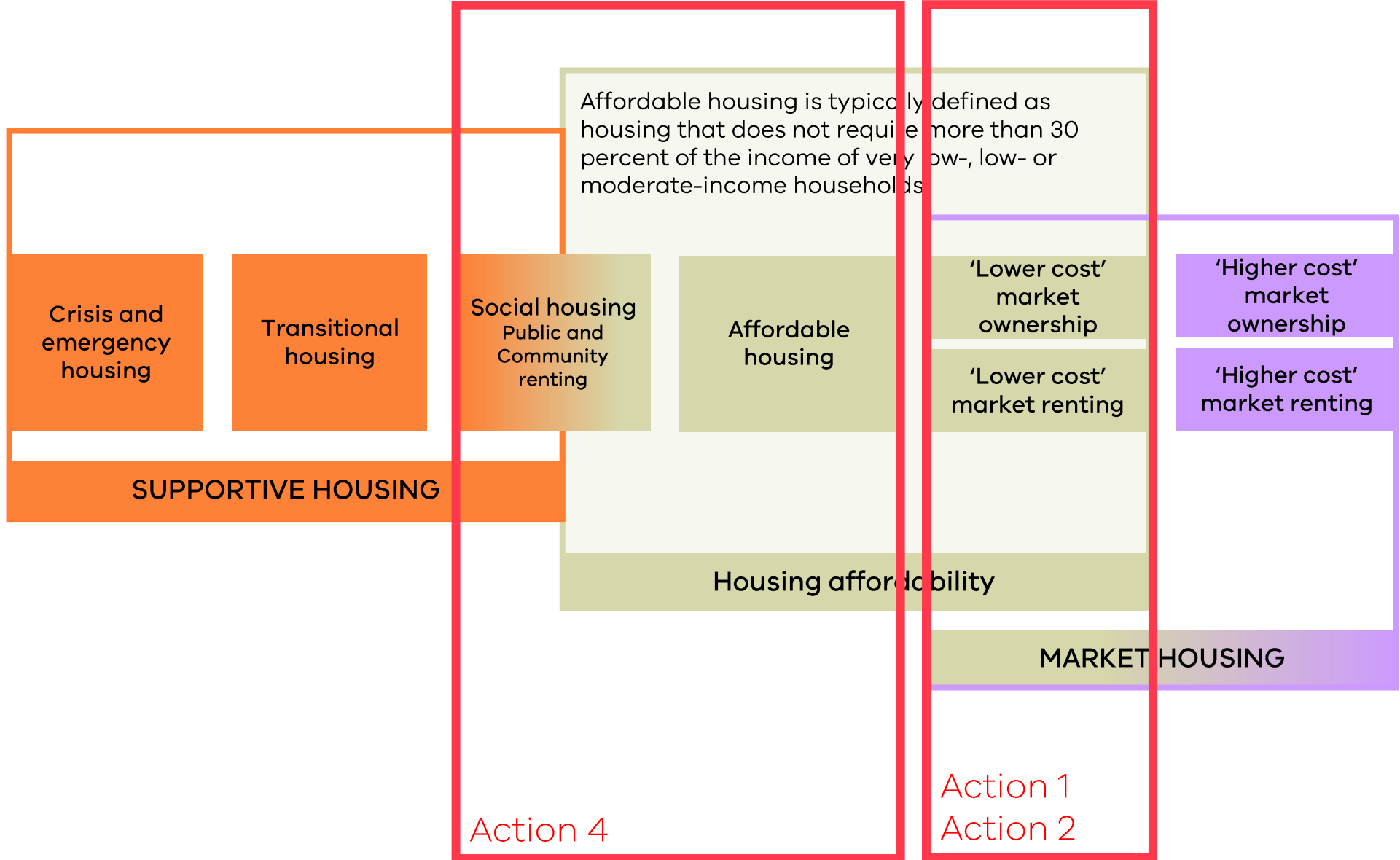


- Victorians want affordable and diverse housing
- Support for more social and affordable housing
- Different types of homes to meet the needs of all communities
- Support to show how areas will grow and change
- Support for removing minimum parking standards in appropriate locations
- Ensure the design and construction of new apartments is high-quality

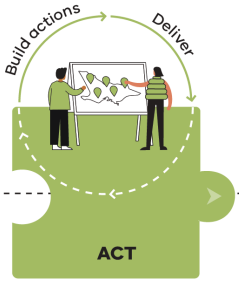
Housing for all Victorian: **Analyse**



Homelessness
Couch surfing
Rough sleeping

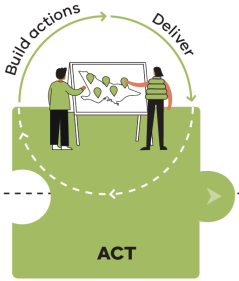


Act: Deliver



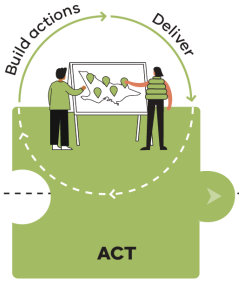
Pillar	Actions
Housing for all Victorians	<ul style="list-style-type: none">• Implement housing targets for every local government area• Implement new planning controls to streamline planning in activity centres• Carefully manage the outward sprawl of regional cities and towns• Increase the number of social and affordable homes• Match car and bike parking requirements and bike facilities with demand• Update the Better Apartments Design Standards and the Apartment Design Guidelines for Victoria

Act: Deliver



Pillar	Actions
Accessible jobs and services	<ul style="list-style-type: none">• Improve transport network planning policy• Ensure new industrial and commercial land is ready for development• Streamline community infrastructure developer contributions• Coordinate public infrastructure and service delivery to support more homes
Great places, suburbs and towns	<ul style="list-style-type: none">• Protect and enhance our canopy trees• Make the best use of land at train stations• Update design guidance to deliver better public places• Encourage walking and cycling
Sustainable environments	<ul style="list-style-type: none">• Improve the environmental sustainability of development• Better communicate and manage flood, bushfire and climate hazard risks• Protect our Birrarung (Yarra River)• Protect and carefully use regional resources

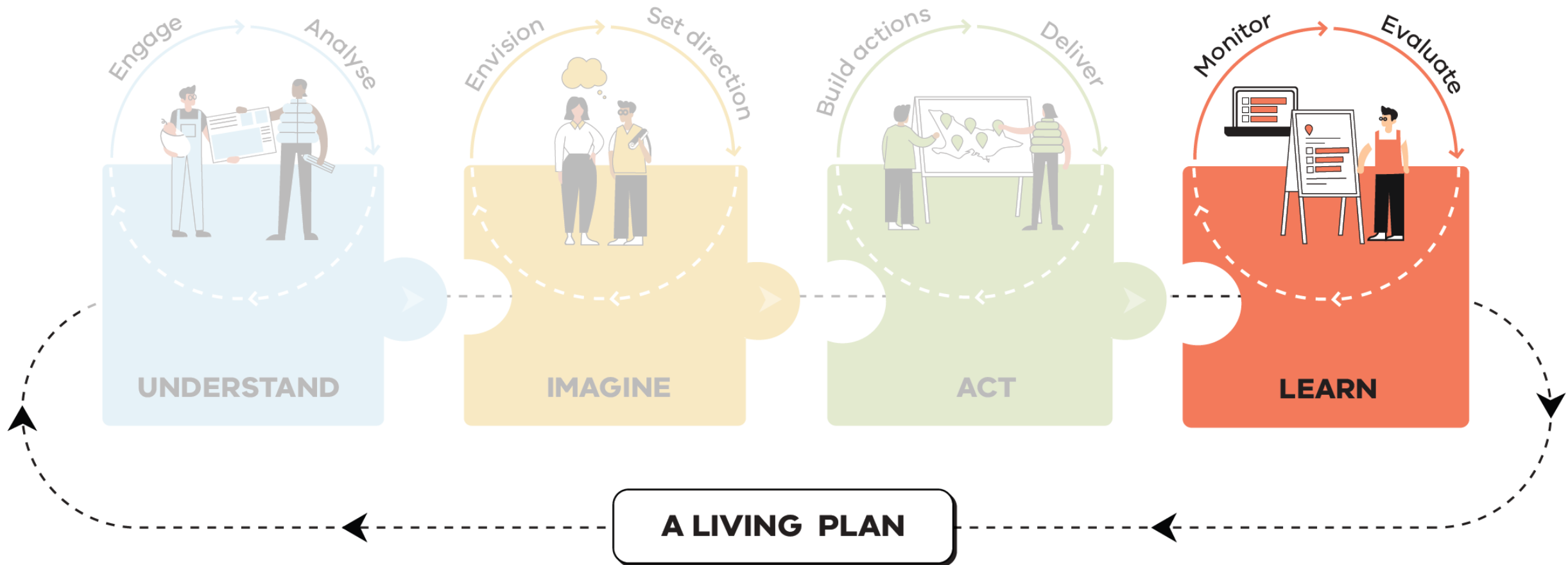
Act: Deliver



22 actions have been developed as a direct result of what we have heard from the feedback. Our actions will help us to create more homes, more jobs and great communities.

Pillar	Actions
Self - determination and caring for Country	<ul style="list-style-type: none">• Make the planning system fairer for Traditional Owners and First Peoples• Embed Traditional Owners' knowledge in the built environment, and introduce more Traditional Owner place names in partnership with Traditional Owners• Reflect Country in planning schemes where supported by and following ongoing engagement with Traditional Owners

Understand → Imagine → Act → Learn



Thank you



Department
of Transport
and Planning